

# Taking It All the Way

- From Preservation to Publishing





# Introduction to the Stills Archive

- Founded in 1933 by The Swedish Film Society
- The Film Historic Collections becomes a member of FIAF in 1946
- The entire collection is donated to the newly founded Swedish Film Institute in 1964
- The collection is moved to Filmhuset in 1970



The Swedish Film Foundation, 1933

# Introduction to the Stills Archive

- Founded in 1933 by The Swedish Film Society
- The Film Historic Collections becomes a member of FIAF in 1946
- The entire collection is donated to the newly founded Swedish Film Institute in 1964
- The collection is moved to Filmhuset in 1970



The first public space for The Film Historic Collections, 1935 -38.

# The Stills Archive today

- Stopped collecting stills from foreign productions in 2015
- Born digital, stills and posters
- Still collecting printed posters
- Collection strategies



The Stills Archive



# The Stills Archive today

- Stopped collecting stills from foreign productions in 2015
- Born digital, stills and posters
- Still collecting printed posters
- Collection strategies



# The Stills Archive today

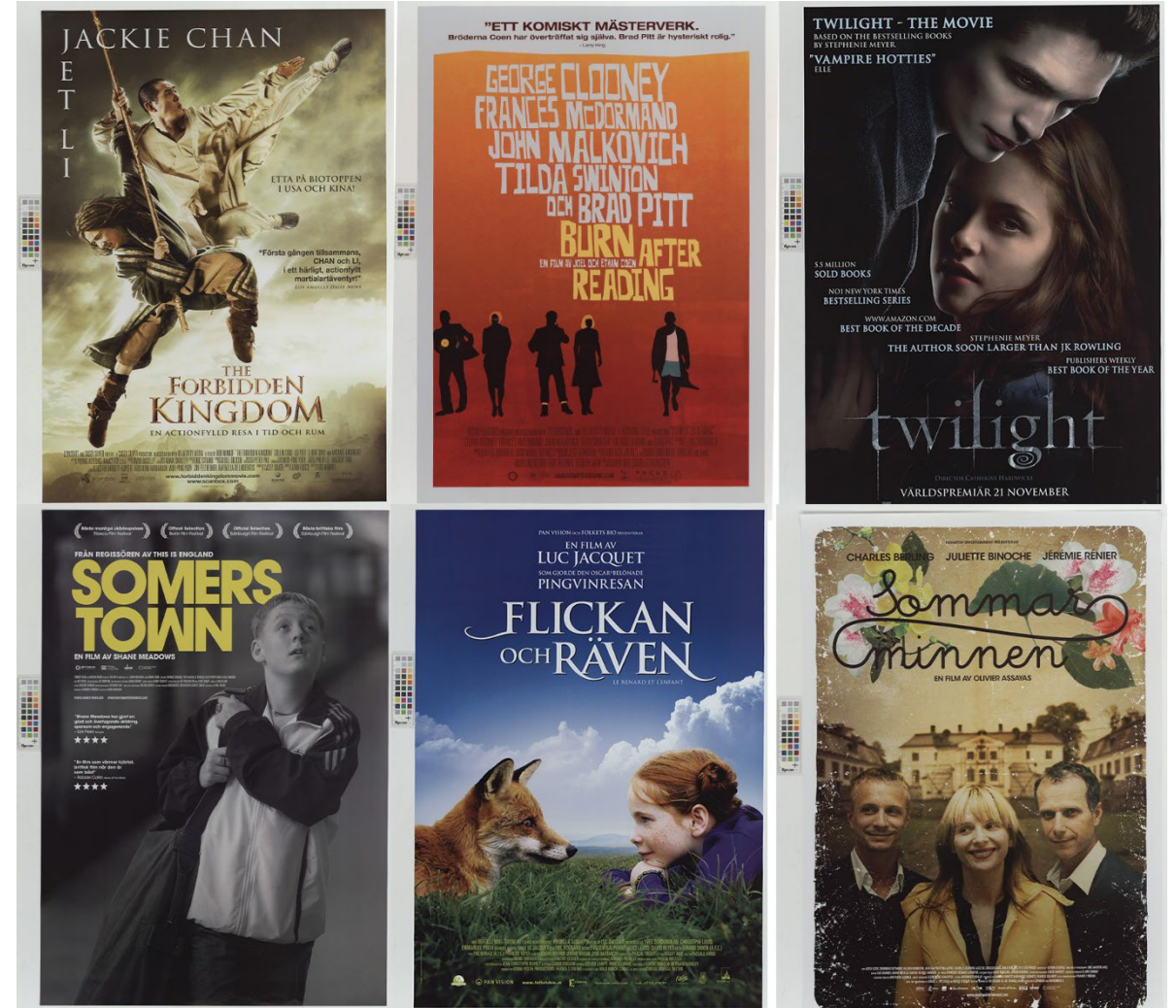
- Stopped collecting stills from foreign productions in 2015
- Born digital, stills and posters
- Still collecting printed posters
- Collection strategies





# The Stills Archive today

- Stopped collecting stills from foreign productions in 2015
- Born digital, stills and posters
- Still collecting printed posters
- Collection strategies



# Digitization of the print collection

- Scan all stills for the Swedish film productions
- Preservation and accessibility
- Priorities and demands



Stills from The Shame (1968)



# Overview of the process

---

1. Making the selection
2. Scanning
3. Long-term preservation
4. Metadata enrichments
5. Uploading to databases
6. Publishing on the Swedish Film database
7. Rights and image agreements

# Making the selection

- Appraisal and deaccession
- Variations of original prints
- Selection based on technical quality
- Deterioration versus image quality



Stills folders for "The Shame" (1968)



# Making the selection

- Appraisal and deaccession
- Variations of original prints
- Selection based on technical quality
- Deterioration versus image quality



"Vi tre debutera" (1953)

# Making the selection

- Appraisal and deaccession
- Variations of original prints
- Selection based on technical quality
- Deterioration versus image quality



Lobbycard from "Konsten att älska" (1947)



# Scanning

We use two sets of scanners for this project.

- Epson Expression 12000XL - for larger stills
- Epson Perfection 850 - for small stills

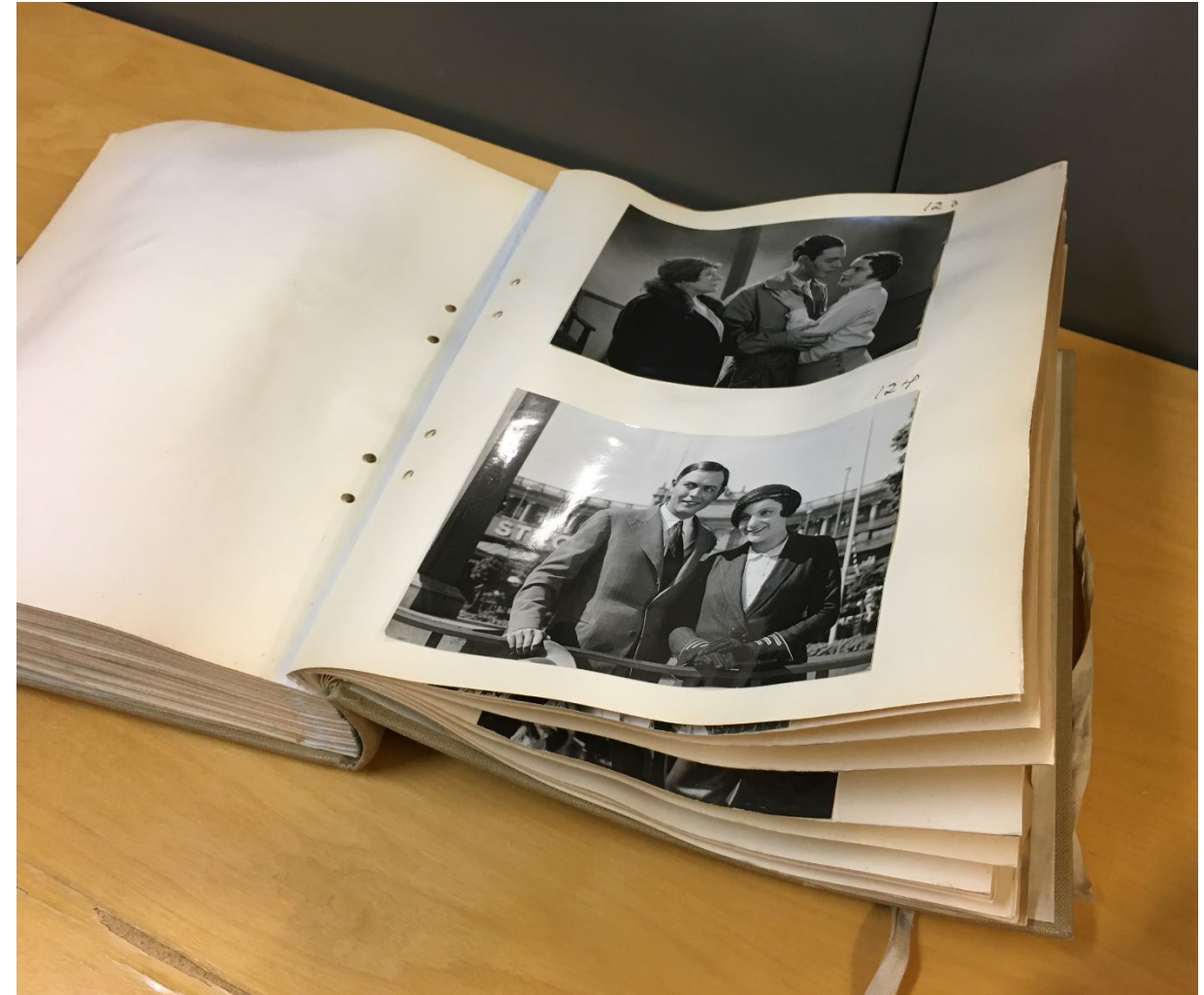


Epson Expression 12000XL

# Scanning

We use two sets of scanners for this project.

- Epson Expression 12000XL - for larger stills
- Epson Perfection 850 - for small stills



Album with stills from Brokiga blad (1931)



# Scanning

We use two sets of scanners for this project.

- Epson Expression 12000XL - for larger stills
- Epson Perfection 850 - for small stills



Svensk Filmindustri's album collection

# Three scanning sizes

- Size 1 - 0-16 cm - 1200 dpi
  - Size 2 - 16-20 cm - 800 dpi
  - Size 3 – over 20 cm - 600 dpi
- 
- This results in 5000 x 7000 px give or take.
  - We always scan and save in 16 bit, tiff
  - Convert to Adobe RGB (1998) in the profile output in the scanner programs, (Silverfast and Epson scan).



Behind-the-scenes and costume samples from "The Shame" (1968).



# Three scanning sizes

- Size 1 - 0-16 cm - 1200 dpi
  - Size 2 - 16-20 cm - 800 dpi
  - Size 3 – over 20 cm - 600 dpi
- 
- This results in 5000 x 7000 px give or take.
  - We always scan and save in 16 bit, tiff
  - Convert to Adobe RGB (1998) in the profile output in the scanner programs, (Silverfast and Epson scan).



Published books

# Long-term preservation

Storage and material.

## Before scanning:

- inhouse
- relative humidity between 25-40% and 20°C
- stored in non-archival material
- available for research



Duplicate storage



# Long-term preservation

Storage and material.

## Before scanning:

- inhouse
- relative humidity between 25-40% and 20°C
- stored in non-archival material
- available for research



Extreme case of poor storage and dry climate

# Long-term preservation

## After scanning:

- repacked in archive safe materials
- cold storage 6°C
- controlled relative humidity 37%
- supervised climate
- available as files



Archival storage in Rotebro



# Long-term preservation

## After scanning:

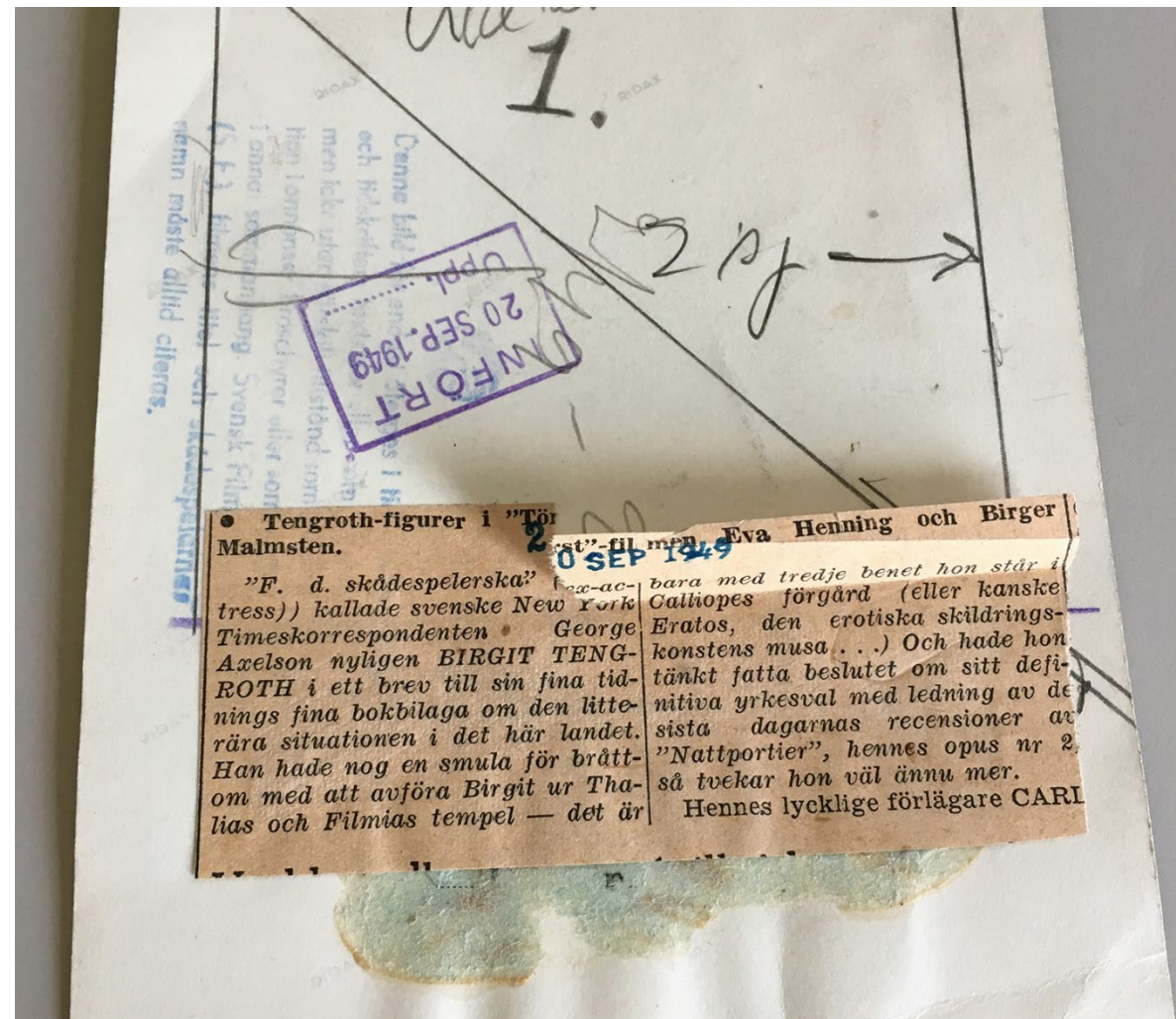
- repacked in archive safe materials
- cold storage 6°C
- controlled relative humidity 37%
- supervised climate
- available as files



Archival storage in Rotebro

# Metadata enrichments

- **Program:** Photo Mechanic
- **Caption:** names of people depicted and "information from the stills back side"
- **Headline:** film title and production year
- **Keywords:** Swedish film, feature film, short film, behind-the-scene
- **Source:** print, b/w, color (neg, dia, framegrab)
- Special instructions, copyright, photographer
- FilmID and PersonID from Axiell Collections



Example of the back of a still image



# CMS and DAM

## Axiell Collections

- Web-based CMS
- For archival holdings and filmographic metadata.
- Film-ID and Person-ID
- Master files and user files

Postbeskrivning

Verk: Identifiering

-Identifiering-

**Film-ID** 4330

Nivå Verk

Beskrivningstyp (1.2.1) Självständigt verk

Premiärnummer Allmän Sverige 1951/14

-Globala IDs-

Wikidata Identifier Q1471325

IMDB-nummer tt0043567

EIDR-nummer

ISAN-nummer

VIAF-nummer

-Titel-

Titel

Fröken Julie

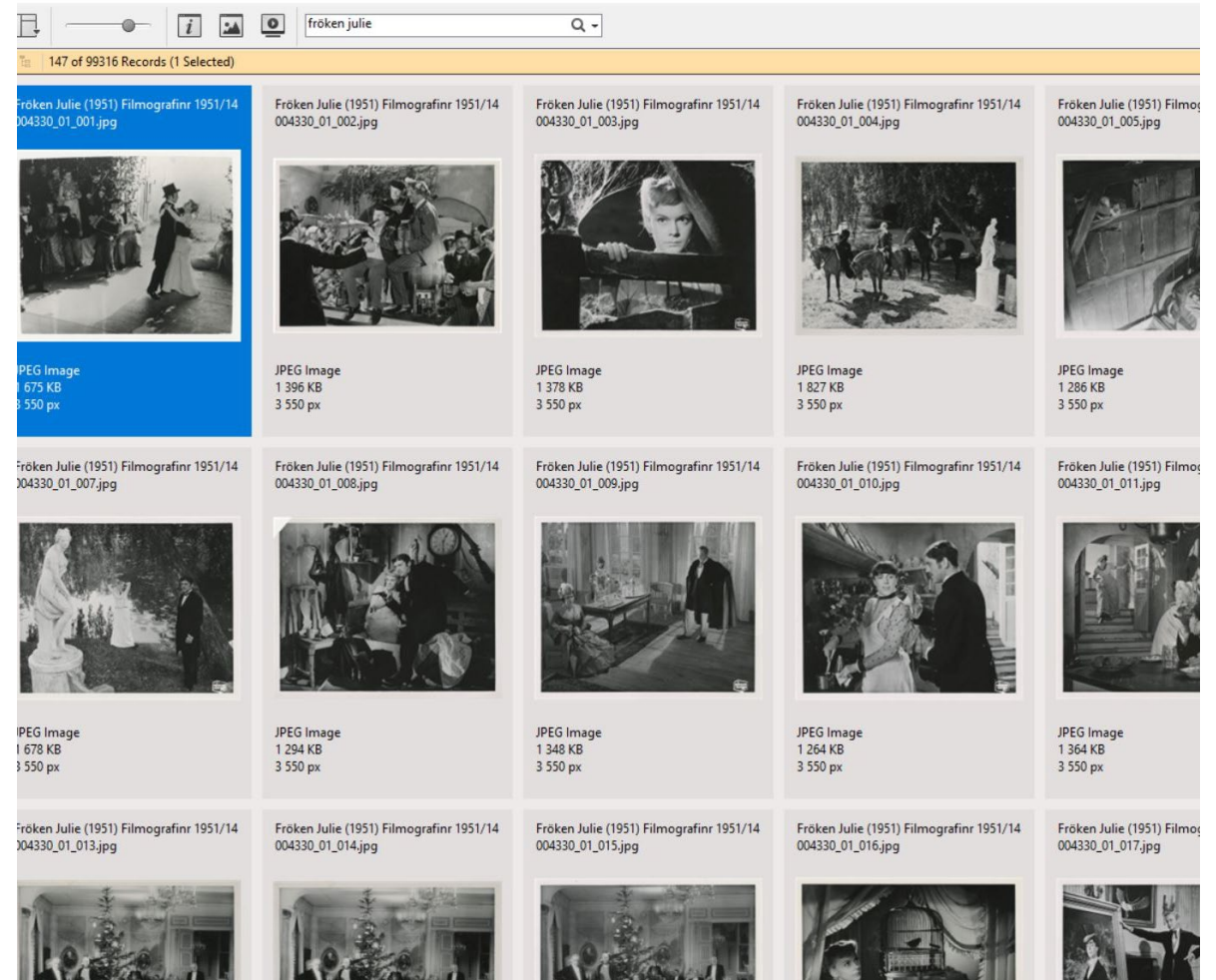
Typ Originaltitel

Anmärkningar

# CMS and DAM

## Canto Cumulus

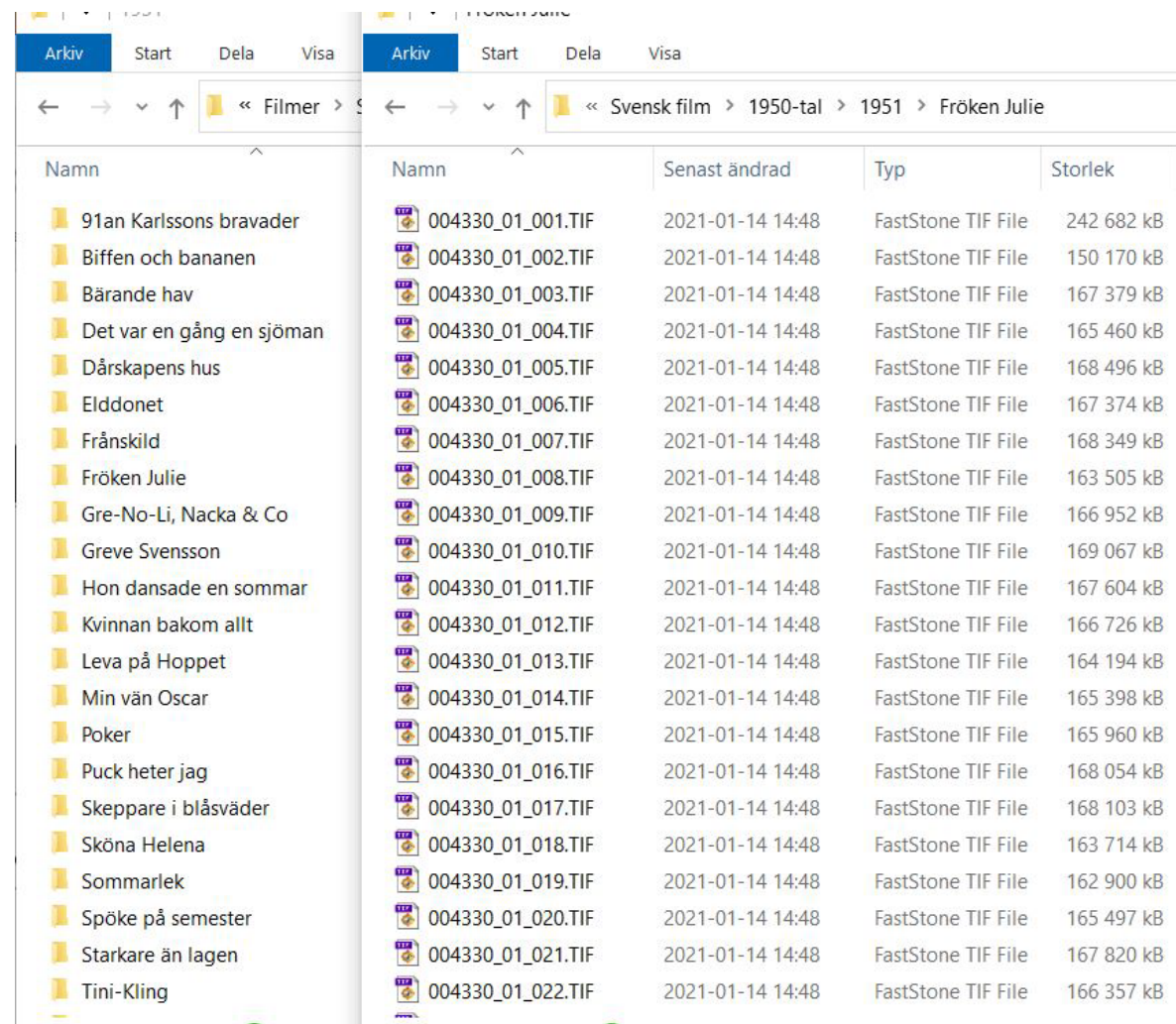
- On-prem DAM
- For digital stills and posters.
- Soon to be replaced





# The name of the file

- Film-ID
- Category
- Serial number
- Consistency



Namn	Senast ändrad	Typ	Storlek
004330_01_001.TIF	2021-01-14 14:48	FastStone TIF File	242 682 kB
004330_01_002.TIF	2021-01-14 14:48	FastStone TIF File	150 170 kB
004330_01_003.TIF	2021-01-14 14:48	FastStone TIF File	167 379 kB
004330_01_004.TIF	2021-01-14 14:48	FastStone TIF File	165 460 kB
004330_01_005.TIF	2021-01-14 14:48	FastStone TIF File	168 496 kB
004330_01_006.TIF	2021-01-14 14:48	FastStone TIF File	167 374 kB
004330_01_007.TIF	2021-01-14 14:48	FastStone TIF File	168 349 kB
004330_01_008.TIF	2021-01-14 14:48	FastStone TIF File	163 505 kB
004330_01_009.TIF	2021-01-14 14:48	FastStone TIF File	166 952 kB
004330_01_010.TIF	2021-01-14 14:48	FastStone TIF File	169 067 kB
004330_01_011.TIF	2021-01-14 14:48	FastStone TIF File	167 604 kB
004330_01_012.TIF	2021-01-14 14:48	FastStone TIF File	166 726 kB
004330_01_013.TIF	2021-01-14 14:48	FastStone TIF File	164 194 kB
004330_01_014.TIF	2021-01-14 14:48	FastStone TIF File	165 398 kB
004330_01_015.TIF	2021-01-14 14:48	FastStone TIF File	165 960 kB
004330_01_016.TIF	2021-01-14 14:48	FastStone TIF File	168 054 kB
004330_01_017.TIF	2021-01-14 14:48	FastStone TIF File	168 103 kB
004330_01_018.TIF	2021-01-14 14:48	FastStone TIF File	163 714 kB
004330_01_019.TIF	2021-01-14 14:48	FastStone TIF File	162 900 kB
004330_01_020.TIF	2021-01-14 14:48	FastStone TIF File	165 497 kB
004330_01_021.TIF	2021-01-14 14:48	FastStone TIF File	167 820 kB
004330_01_022.TIF	2021-01-14 14:48	FastStone TIF File	166 357 kB

# The Swedish Film Database

- Export of images from Cumulus
- 100.000 images published on [svenskfimldatabas.se](http://svenskfimldatabas.se)

## Rights:

- Mass publication with Extended Collective Licence (ECL)
- Sales and image licensing (AB Svensk Filmindustri)

× +  
kfilmdatabas.se/sv/item/?type=film&itemid=4330

≡ | **Svensk Filmdatabas:** 🔍 EN Svenska Filminstitutet

**Fröken Julie**  
(1951)  
Digitaliserad film Sverige, 90 min

← Dela denna sida    ↗ Hitta filmen

▼ Innehållsförteckning

Grundfakta

Media (148 st)

Originaltitel	Fröken Julie
Filmtyp	Långfilm
Kategori	Spelfilm
Regi	Alf Sjöberg
Manus	Alf Sjöberg
Förlaga	Fröken Julie (Pjäsa)
Produktionsland	Sverige
Produktionsbolag	AB Sandrew-Produktion
Utmärkelser	Chaplin-priset Circle Prize

**Medverkande**

Anita Björk fröken Julie	Lissi Alandh Eberta, grevinna, Julies mor
Ulf Palme Jean, betjänt	Anders Henrikson greve Carl, Julies far
Märta Dorff Kristin, kokerska, Jeans väninna	Inga Gill Viola

**Visa fler**

**Om filmen**

Augusts Strindbergs naturalistiska köksdrama om klass- och könskamp inspirerade Alf Sjöberg till en filmatisering som överskred inte bara förlagans ramar utan också regissörens...

[www.svenskfimldatabas.se](http://www.svenskfimldatabas.se)



# Tack!